



EMA-TECH INDUSTRIAL COATING SYSTEMS INC.

ЗА ФИРМАТА /
COMPANY PRESENTATION

3A ΦΙΡΜΑΤΑ

Since its establishment, EMA-Tech introduced a new outlook toward coating systems, to be your leading partner in this field in Turkey .

Insisting on continuous R&D, EMA-Tech offers up-to-date and efficient products, which after instalation, become as solutions for required applications.

Offering technological solution, EMA-Tech also provides customers with consultancy on fileds of service, product supply and take in charge active projects. EMA-Tech offers professional installation of paintshop facilities as well as after-sales service and spare parts supply.

Adjustable projects, service experiences, approach and its quality, EMA-Tech provides fast & effective solutions for a wide range of products from a stndard paint booth to multi component and complex coating line facilities.

Why EMA-Tech

High Performance / Optimum Cost

All EMA-Tech solutions are products which their possession investment and operation cost are at the optimum level. Integrated feature of our solution, combining with current technology eliminates the need for a separate investment in any certain field.

Scalable Solutions

EMA-Tech products included a wide range of product from a standard paint booth to complex a coating line facilities which are designed according to customer requirements. Scalable structure of products make it possible to extend them without thrown out of the initial investment . As a result a small started operation with smart moves, can be extended without enduring the severe costs.

Flexible and Integratable Solutions

All EMA-Tech solution are based on optimum operation cost and user freindly utilization. Our flexible structure which is open to integration with different approaches, provides you with efficient evaluations of potentials.

After Sales Support

Multi-component systems likes coating lines can bring about different needs and expectations after the installation. As a result editing requests in the existing system is unavoidable. Our support policy perspective to problems is not in EMA-Tech privacy, examination of all the point in the work environment and involves the sharing of solutions. The main goal is to ensure the detection of the problem and resolve the problem in optimum way.



НАШИТЕ МАШИНИ / MACHINE PARK



aselsan



ŠKODA



НАШИТЕ КЛИЕНТИ / REFERENCES

ПРОИЗВОДСТВО ЗА СВЕРИТЕ / EMA PRODUCTION FIELDS

- * КАМЕРИ ЗА БОЯДИСВАНЕ И ИЗСУШАВАНЕ /
COMBINED PAINTING AND DRYING BOOTHS
- * ЦЯЛОСТНИ ЛИНИИ ЗА МОКРО БОЯДИСВАНЕ /
WET PAINTING LINES
- * ЛИНИИ ЗА ПРАХОВО БОЯДИСВАНЕ / POWDER
COATING LINES
- * СИСТЕМИ ЗА ХИГИЕНИЗИРАНЕ,
ОБЕЗМАСЛЯВАНЕ И ФОСФАТАЦИЯ /
PRETREATMENT LINES
- * КАМЕРИ ЗА ПЯСЪКОСТРУЕНЕ И БЛАСТИРАНЕ /
SHOOTBLASTING BOOTHS

**КАМЕРИ ЗА
БОЯДИСВАНЕ И
ИЗСУШАВАНЕ /
COMBINED PAINTING AND
DRYING BOOTHS**

**ELEN-7 БОЯДЖИЙСКИ
КАМЕРИ / PAINTING AND
DRYING BOOTH**





ПРОЕКТИ /
PROJECT

КАМЕРИ ЗА БОЯДИСВАНЕ И ИЗСУШАВАНЕ / PAINTING AND DRYING BOOTH

ELEN-7

ДАТА:

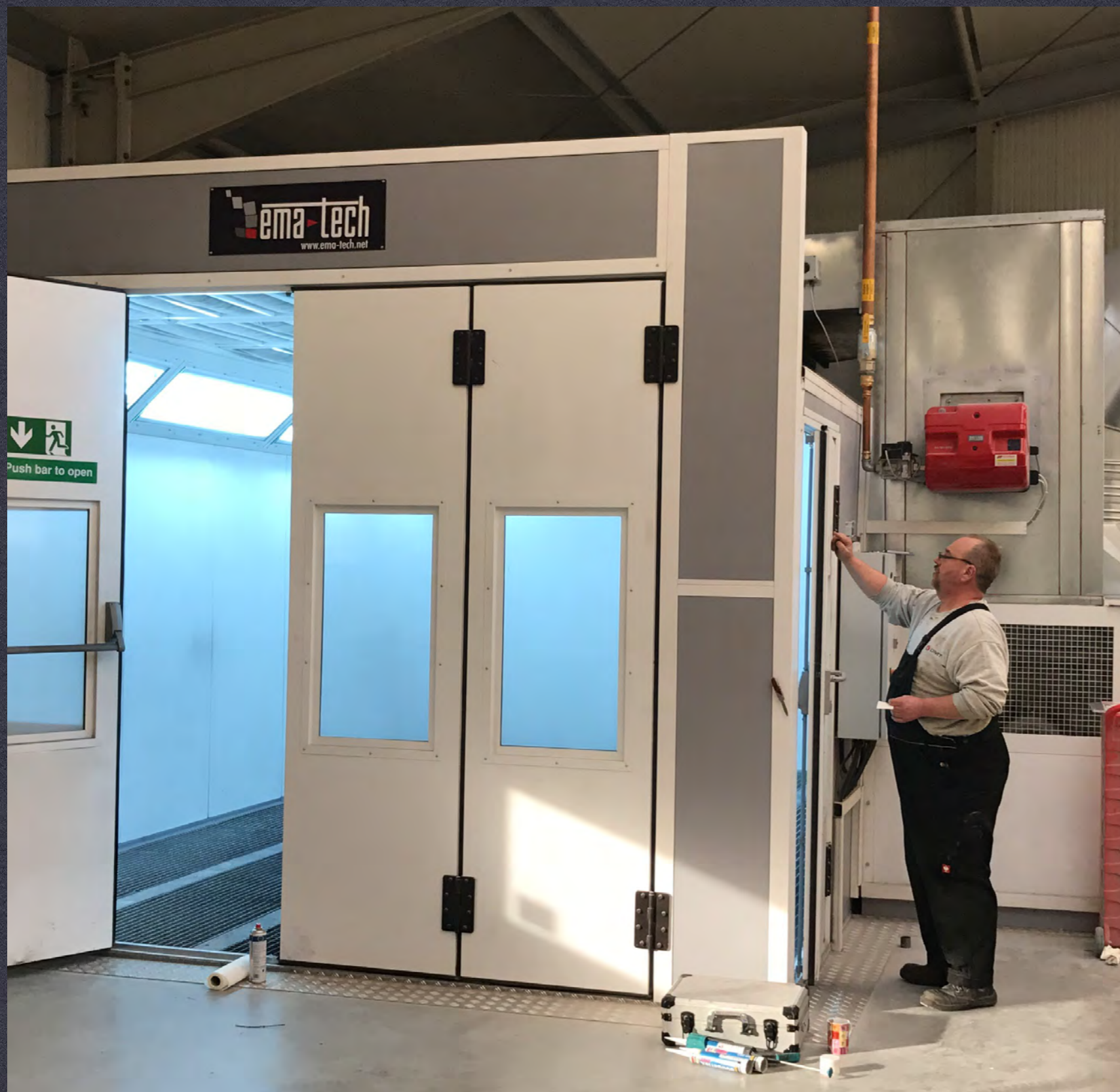
2019

КЛИЕНТ:

КАНИ КАР ЕООД



**КАМЕРИ ЗА БОЯДИСВАНЕ И ИЗСУШАВАНЕ /
PAINTING AND DRYING BOOTHS**



**КАМЕРИ ЗА БОЯДИСВАНЕ И ИЗСУШАВАНЕ /
PAINTING AND DRYING BOOTHS**



**КАМЕРИ ЗА БОЯДИСВАНЕ И ИЗСУШАВАНЕ /
PAINTING AND DRYING BOOTHS**



**КАМЕРИ ЗА БОЯДИСВАНЕ И ИЗСУШАВАНЕ /
PAINTING AND DRYING BOOTHS**

**ЛИНИИ ЗА МОКРО
БОЯДИСВАНЕ**

**WET PAINTING
LINES**



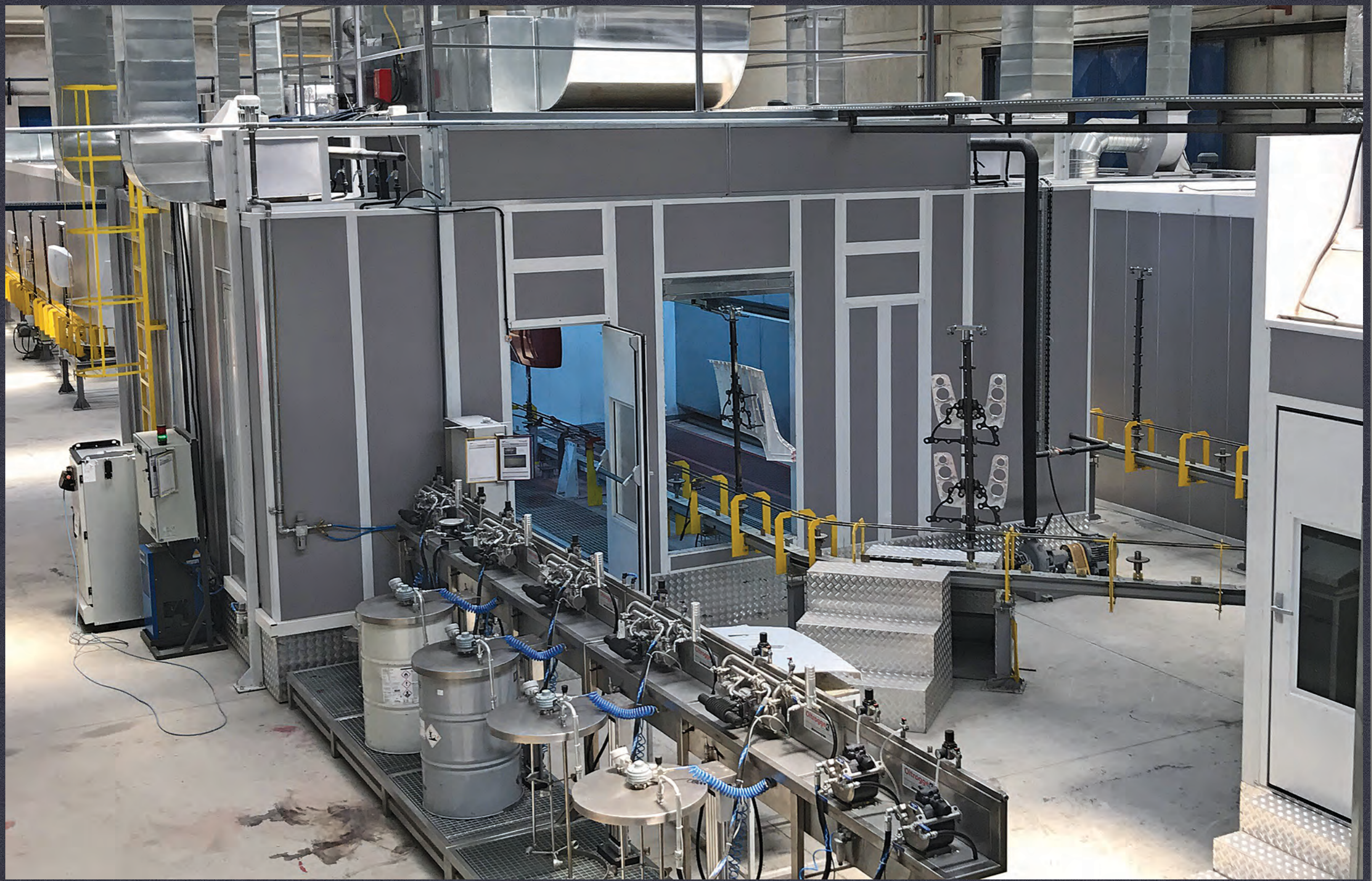


ЛИНИИ ЗА МОКРО БОЯДИСВАНЕ / WET PAINTING LINE

ЛИНИИ ЗА СЕЛСКОСТОПАНСКИ МАШИНИ ЗА МОКРО БОЯДИСВАНЕ /
CONVEYOYERED WET PAINTING LINE FOR AGRICULTURAL MACHINES



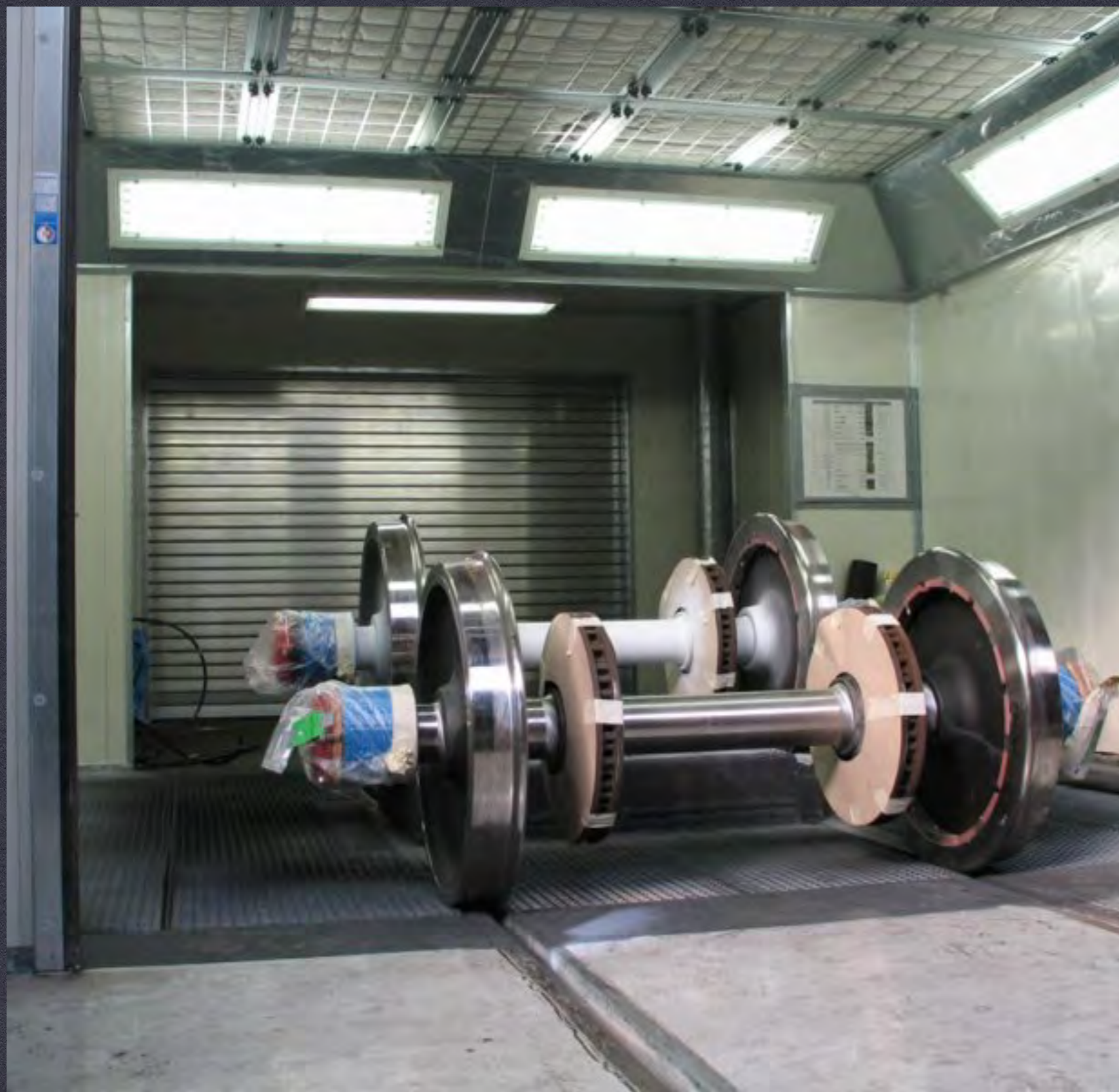
СИСТЕМИ ЗА МОКРО БОЯДИСВАНЕ / WET PAINTING SOLUTIONS



СИСТЕМИ ЗА МОКРО БОЯДИСВАНЕ / WET PAINTING SOLUTIONS



**РОБОТИЗИРАНИ СИСТЕМИ ЗА МОКРО БОЯДИСВАНЕ /
ROBOTIC WET PAINTING LINE**



РЕШЕНИЯ ЗА МОКРО БОЯДИСВАНЕ / WET PAINTING SOLUTIONS



СИСТЕМИ ЗА МОКРО БОЯДИСВАНЕ / WET PAINTING LINE



СИСТЕМИ ЗА МОКРО БОЯДИСВАНЕ / WET PAINTING SOLUTIONS



СИСТЕМИ ЗА МОКРО БОЯДИСВАНЕ / WET PAINTING LINE

**ЛИНИИ ЗА
ПРАХОВО
БОЯДИСВАНЕ**

**POWDER
COATING LINES**





**ЦЯЛОСТНИ ПОТОЧНИ ЛИНII ЗА ПРАХОВО БОЯДИСВАНЕ /
POWDER COATING SOLUTIONS**



**ЦЯЛОСТНИ ПОТОЧНИ ЛИНII ЗА ПРАХОВО БОЯДИСВАНЕ /
POWDER COATING SOLUTIONS**



**ЦЯЛОСТНИ ПОТОЧНИ ЛИНII ЗА ПРАХОВО БОЯДИСВАНЕ НА ДЖАНТИ /
ALUMINIUM WHEEL POWDER COATING SOLUTIONS**



**ЦЯЛОСТНИ ПОТОЧНИ ЛИНII ЗА ПРАХОВО БОЯДИСВАНЕ /
POWDER COATING SOLUTIONS**



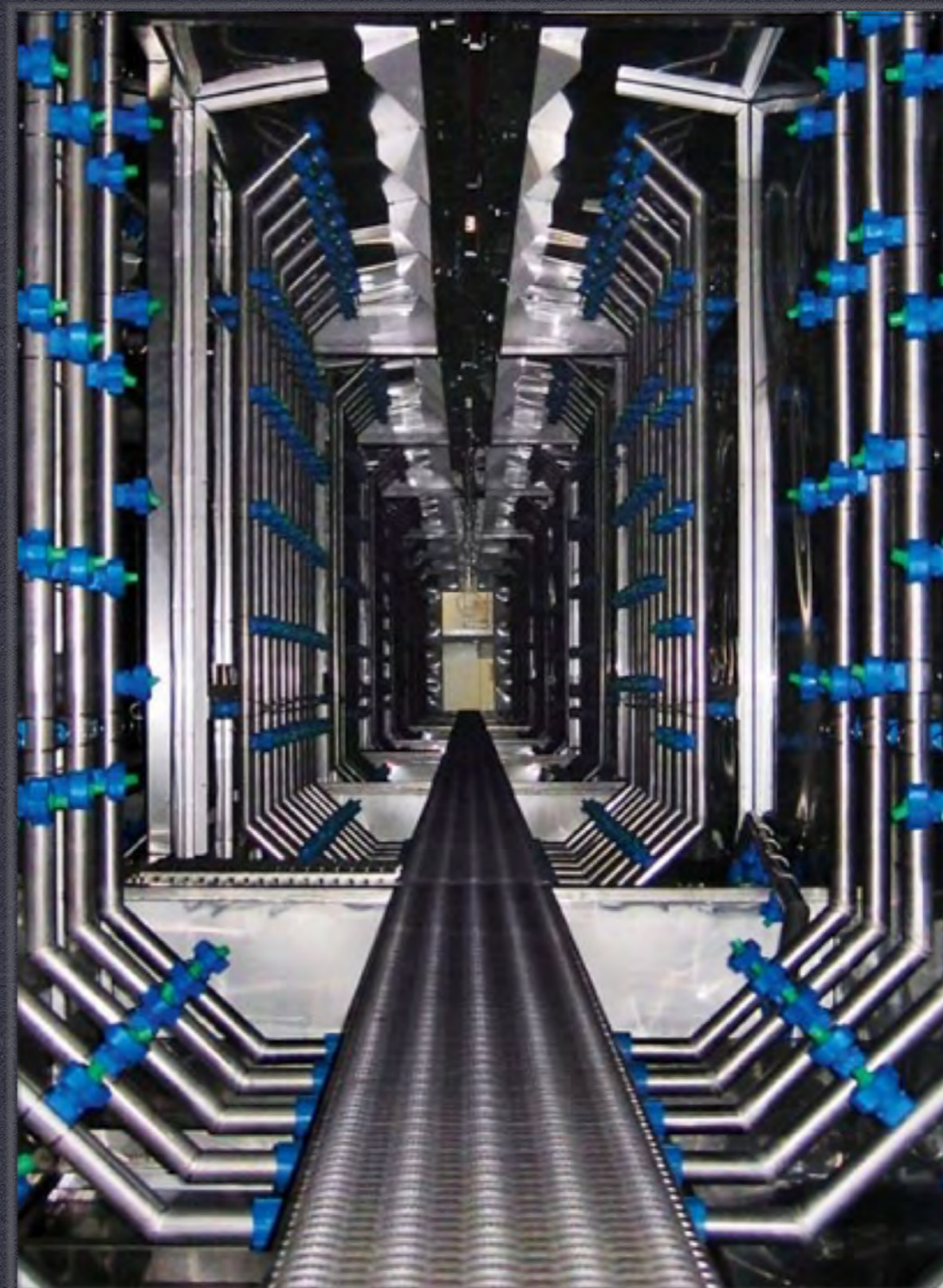
**МОНОЦИКЛОННА КАМЕРА ЗА ПРАХОВО БОЯДИСВАНЕ /
POWDER COATING BOOTHS**



**ЦЯЛОСТНИ ПОТОЧНИ ЛИНII ЗА ПРАХОВО БОЯДИСВАНЕ /
POWDER COATING SOLUTIONS**

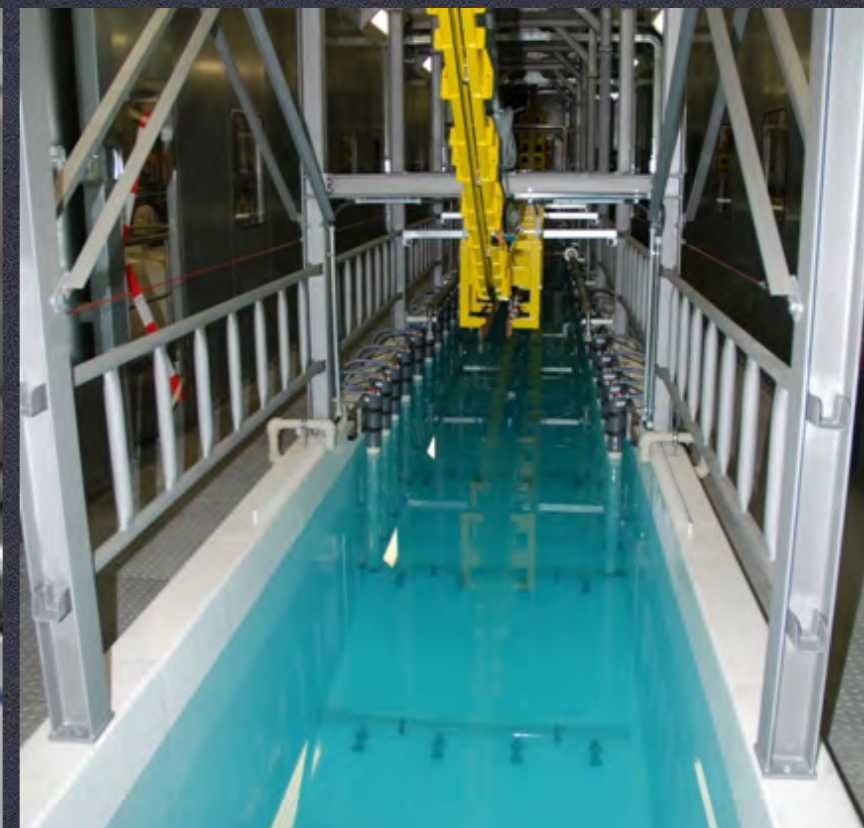
**СИСТЕМИ ЗА
ХИГИЕНИЗИРАНЕ,
ОБЕЗМАСЛЯВАНЕ И
ФОСФАТАЦИЯ**

**PRETREATMENT
T LINES**





СИСТЕМИ ЗА ХИГИЕНИЗИРАНЕ, ОБЕЗМАСЛЯВАНЕ И ФОСФАТАЦИЯ
/ PREATREATMENT SOLUTIONS



**РЕШЕНИЕ ЗА ПОВЪРХНАСТНО ПОЧИСТВАНЕ /
PREATREATMENT SOLUTIONS**



**ХИГИЕНИЗИРАНЕ, ОБЕЗМАСЛЯВАНЕ И ФОСФАТАЦИЯ ПОД НАЛЯГАНЕ /
PREATREATMENT SOLUTIONS - POWER WASH**

**КАМЕРИ ЗА
ПЯСЪКОСТРУЕНЕ И
БЛАСТИРАНЕ**

**SHOOTBLASTING
BOOTHS**





РЕШЕНИЯ ЗА ПЯСЪКОСТРУЕНЕ И БЛАСТИРАНЕ
SHOOTBLASTING SOLUTIONS



**КАМЕРИ ЗА ПЯСЪКОСТРУЕНЕ И БЛАСТИРАНЕ /
SHOOTBLASTING SOLUTIONS**

“Качеството никога не е случайно; тя винаги е резултат от интелигентни усилия”

– *John Ruskin* –



АДАА КОЛОП ЕООО

www.adacolor-bg.com

гр. София, бул. „Никола Мушанов“ 114
тел./факс: 02/822 8170, GSM: 0894 683 880

гр. Пловдив, ул. „Брезовско шосе“ 176
тел.: 032/940 456, тел./факс: 032/940 457

гр. Шумен, бул. "Ришки проход" №185
GSM: 089 339 2667, 0894 551 633

гр. Русе, ул. „Николаевска“ 40,
GSM: 089 666 3043, 089 666 3046

гр. Кърджали, ул. „Клокотница“ 1
тел./факс: 0361/22 147, GSM: 089 575 0749

гр. Троян, ул. „Македония“ 49
тел.: 0670/64 501, GSM: 089 666 9079

гр. Хасково, бул. „Съединение“ 43
GSM: 089 472 0943

гр. Хасково, бул. „Освобождение“, местност „Каменец“
GSM: 089 666 3051

WWW.ADACOLOR-BG.COM